

Standard heating jackets

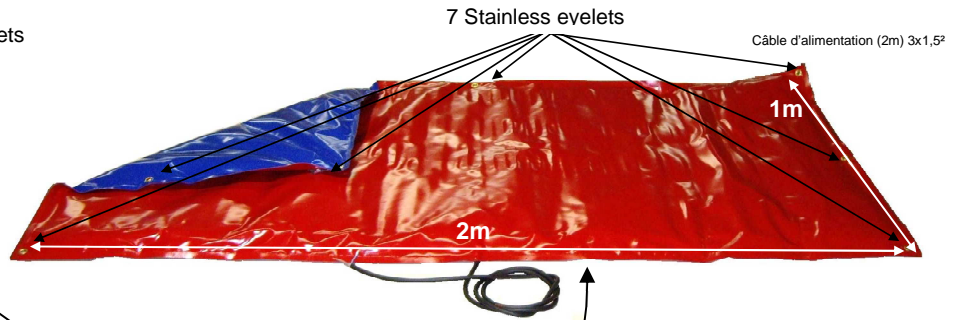
1x1m – 1x2m – 2x2m

Easy, efficient and fast solution to prevent from freeze or condensation, to warm or to maintain temperature

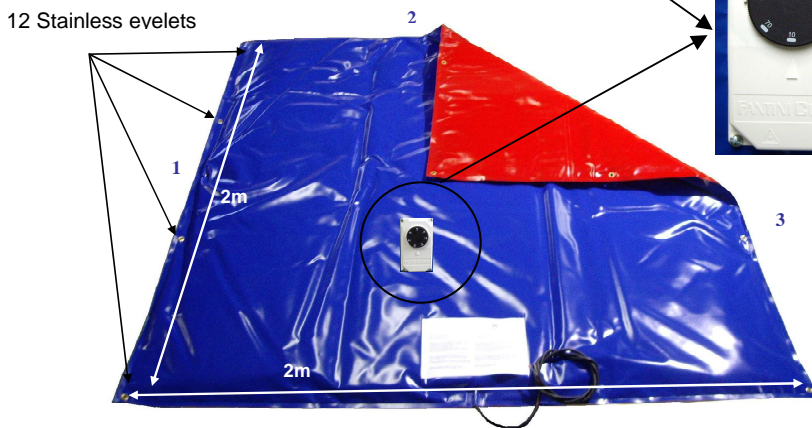
1x 1m heating jacket



1x 2m heating jacket



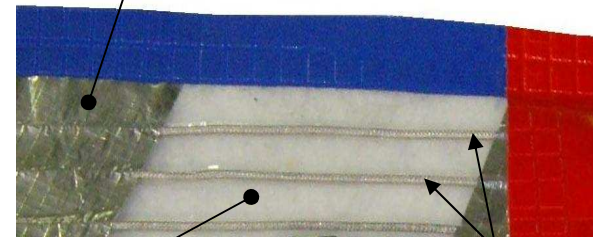
2x 2m heating jacket



built-in thermostat : from +10°C to +70°C



Aluminium foil (homogeneous t⁹)



insulation

Heating cord

Technical data :

Reference	B1001000400FT	B1002000800FT	B2002001600FT
Built-in thermostat	+10°C / +70°C	+10°C / +70°C	+10°C / +70°C
Output	400 W	800 W	1600 W
Voltage	230 V	230 V	230 V
3x1,5 ² main suply cable length	L 2m	L 2m	L 2m
Dimensions	1m x 1m	1m x 2m	2m x 2m
Heating face colour	red	red	red
Insulated face colour	blue	blue	blue
Degree of protection	IP54	IP54	IP54
Stainless eyelets	4	7	12

Other dimensions, outputs and voltages on request

DOC0532A